



WHERE YOUR GENEROUS DONATIONS IMPACT OUR COMMUNITY

2022
2023

AID FOR FRIENDS



EMERGENCY HOMELESS SHELTER
Provides shelter, basic necessities and case management to homeless individuals and families.

BANNOCK YOUTH FOUNDATION



BANNOCK HOUSE EMERGENCY SHELTER
Emergency shelter program available twenty-four hours a day for youth who are at risk of being homeless or are in a crisis situation.

BABYSTEPS PROGRAM
An education and incentive program for families expecting a new baby or have a child under 18 months of age.

BINGHAM COUNTY SENIOR CENTER MEALS ON WHEELS

Provides meals and a well check for homebound seniors in Bingham County.



BINGHAM CRISIS CENTER
Aids survivors of domestic and sexual violence as well as their children at no cost.

BOYS AND GIRLS CLUB OF AMERICA



AFTER SCHOOL PROGRAM
Provides our youth with a whole child approach to promoting healthy eating and physical activity to create a transformational experience in which all youth, families and staff can thrive.

BRIGHT TOMORROWS



CHILD ADVOCACY CENTER
Provides services to reduce the trauma of child sexual abuse in our community and brings professionals together in one unique setting to meet the needs of children and families facing trauma.

CARIBOU COUNTY SENIOR CITIZENS CENTER MEALS ON WHEELS

Provides healthy and nutritious meal deliveries to seniors regardless of their ability to pay.



CASA 6TH JUDICIAL CASA IN CARIBOU COUNTY
Supports effective volunteer advocacy in the best interest of abused, abandoned, and neglected children of the Sixth Judicial District, and ensures every child a safe, permanent, and nurturing home in Caribou County.

FAMILY SERVICES ALLIANCE



ADVOCACY AND COUNSELING PROGRAM
Free and confidential advocacy and counseling services to victims of abuse and violence in Southeastern Idaho.



SPECIAL SERVICES FUND
Assists those in need with paying for medical, behavior health, and dental services.

HEART + HAND OUTREACH MINISTRIES



HEART TO HAND PANTRY
Assists community members with weekly food boxes and on-going nutrition education in North Bingham County.

HOPE AND RECOVERY RESOURCE CENTER

HOPE AND RECOVERY RESOURCE CENTER
ADDICTION ASSISTANCE
Provides recovery coaching and resources for those experiencing addiction in Pocatello, American Falls, and Soda Springs.



THE IDAHO FOODBANK BACKPACK PROGRAM
Provides hungry kids access to adequate food during weekends so they can return to school nourished and ready to learn.



NEW DAY PRODUCTS AND RESOURCES
TRANSPORTATION SERVICES
Offers non-medical transportation to people with disabilities.

ONEIDA CRISIS CENTER & CAROL'S PANTRY

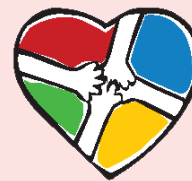


ONEIDA CRISIS CENTER & CAROL'S PANTRY
Provides healing human-centric services to individuals whose lives have been impacted by domestic/family violence, teen dating violence, sexual abuse, stalking, and human trafficking.

OUR GATHERING PLACE

Provides nutritious snacks, safe physical space, and mentoring to high school aged students.

POCATELLO FREE CLINIC



ACCESS TO HEALTHCARE OF UNINSURED ADULTS WITH MENTAL DISTRESS
An integrated management program to ensure the health, mental, and social needs of uninsured adults in Southeastern Idaho undergoing a behavior crisis are met.

EXPANDING ORAL HEALTH AMONG THE UNINSURED
Provides free dental care for uninsured adults.

SENIOR ACTIVITY CENTER CONGREGATE NUTRITION PROGRAM

Healthy meals and socialization for individuals age 60 and older and persons with disabilities.

SHELLEY AREA SENIOR CITIZENS

Provides essential services to the senior population of Northern Bingham County.

SOUTHEASTERN IDAHO COMMUNITY ACTION AGENCY



MEALS ON WHEELS
Provides a much-needed nutritious meal and health and safety check to the community's most at risk population.

SEICAA BINGHAM COUNTY
Assists families and individuals in achieving self-sufficiency.

VETERANS SERVICES PROGRAM
Provides services to address the immediate needs of incoming homeless veterans to stabilize their situation and begin progress on achieving permanent safe and affordable housing.



AREA V AGENCY ON AGING SENIOR NUTRITION PROGRAM
Home-delivered meal program to reduce hunger and food insecurity, promote socialization, and delay the onset of adverse health conditions for adults age 60 and older who are in the greatest social and economic need in seven Southeastern Idaho Counties.



United Way of Southeastern Idaho
101 N Main St, Pocatello, ID 83204
unitedwaysei.org | 208.232.1389